

Technical data sheet

Product features



Freezing cabinet 700 l without compressor Icecream version GN 2/1, stainless steel

| | | |
|--------------|-----------------|----------|
| Model | SAP Code | 00012010 |
|--------------|-----------------|----------|

– GN / EN size in device: GN 2/1

| | | | |
|------------------------|----------|-------------------------------|--------------------|
| SAP Code | 00012010 | Loading | 230 V / 1N - 50 Hz |
| Net Width [mm] | 733 | Gross Volume [m3] | 1.445 |
| Net Depth [mm] | 847 | Net Volume [m3] | 1.298 |
| Net Height [mm] | 2090 | GN / EN size in device | GN 2/1 |
| Net Weight [kg] | 145.80 | | |

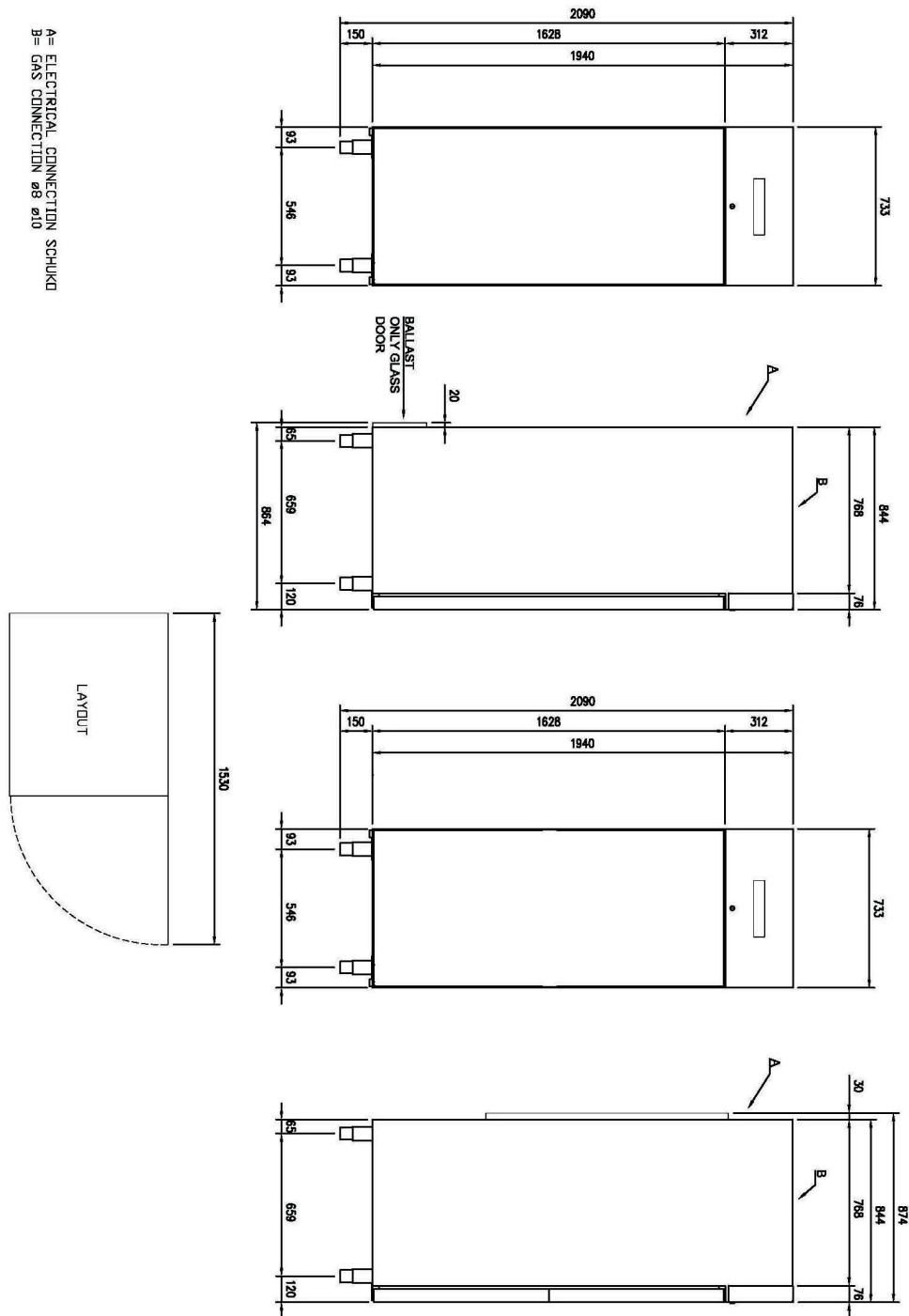
Technical data sheet

Technical drawing



Freezing cabinet 700 l without compressor Icecream version GN 2/1, stainless steel

| | | |
|--------------|-----------------|----------|
| Model | SAP Code | 00012010 |
|--------------|-----------------|----------|



Technical data sheet

Product benefits



Freezing cabinet 700 l without compressor Icecream version GN 2/1, stainless steel

| Model | SAP Code | 00012010 |
|-------|----------|----------|
|-------|----------|----------|

- 1 Insulation 90mm**
 - minimal losses
 - energy saving
- 2 Two-sided opening**
 - location variability
 - greater operational efficiency
 - better kitchen ergonomics
- 3 All-stainless design**
 - corrosion resistance
 - longer service life
 - health safety
- 4 Automatic defrosting**
 - nothing needs to be watched
 - always working properly without extra operator requirements
- 5 Wheels, legs**
 - variability
 - user comfort
- 6 High energy class**
 - minimal energy loss
 - high efficiency
 - guaranteed chilled food
 - cost saving
 - hygienic safety

Technical data sheet

Technical parameters



Freezing cabinet 700 l without compressor Icecream version GN 2/1, stainless steel

Model

SAP Code

00012010

1. SAP Code:

00012010

2. Net Width [mm]:

733

3. Net Depth [mm]:

847

4. Net Height [mm]:

2090

5. Net Weight [kg]:

145.80

6. Gross Width [mm]:

763

7. Gross depth [mm]:

873

8. Gross Height [mm]:

2170

9. Gross Weight [kg]:

160.80

10. Loading:

230 V / 1N - 50 Hz

11. Device properties 2:

Ice cream

12. GN / EN size in device:

GN 2/1

13. Gross Volume [m3]:

1.445

14. Net Volume [m3]:

1.298

15. Adjustable feet:

Yes

16. Unit:

No